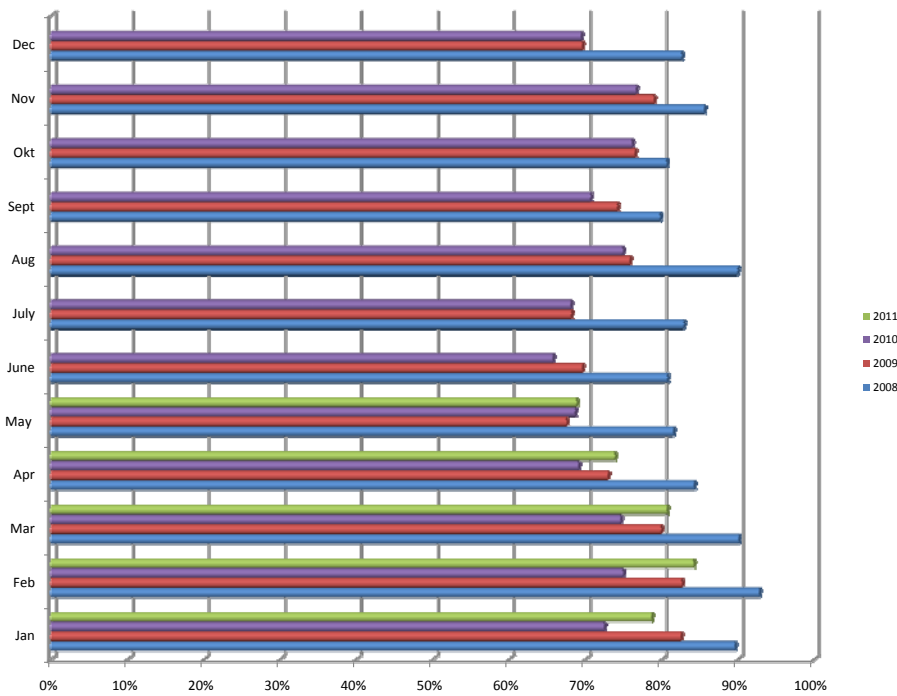




Curacao Hospitality & Tourism Association *Preliminary*  
 Hotel Occupancy 2006/ 2007/2008/ 2009/ 2010/ 2011

	2006	2007	2008	2009	2010	2011
Jan	86.45%	86.46%	89.54%	82.42%	72.37%	78.60%
Feb	89.92%	86.65%	92.70%	82.57%	74.83%	84.10%
Mar	88.28%	83.90%	90.06%	79.85%	74.53%	80.67%
Apr	81.55%	82.88%	84.21%	72.86%	69.02%	73.79%
May	79.53%	71.94%	81.49%	67.45%	68.60%	68.77%
June	72.89%	77.61%	80.71%	69.57%	65.68%	
July	75.66%	81.82%	82.85%	68.10%	68.00%	
Aug	82.69%	89.02%	89.90%	75.76%	74.82%	
Sept	73.48%	83.77%	79.74%	74.15%	70.63%	
Okt	82.51%	85.62%	80.57%	76.45%	76.04%	
Nov	87.02%	88.14%	85.48%	78.90%	76.61%	
Dec	77.50%	82.87%	82.57%	69.51%	69.39%	
<b>Average</b>	<b>81.46%</b>	<b>83.39%</b>	<b>84.99%</b>	<b>74.80%</b>	<b>71.71%</b>	<b>77.19%</b>



**2006** By Hotels: Avila - Breazeal - Chagogo - Floris - Holiday - Lions - Howard Johnson- Marriott - Hilton - Tropical Inn

**2007** By Hotels: Avila - Breazeal - Chagogo - Floris - Holiday - Lions - Howard Johnson- Marriott - Hilton - Tropical Inn

**2008** By Hotels: Avila - Breazeal - Chagogo - Floris - Hilton - Kura Hulanda\* - Liens Dive- Livingstone\* - Marriott - Otobanda - Papagayo\* - Tropical Inn \*December

**2009** By Hotels: Avila - Breazeal - Chagogo - Floris - Hilton - Howard Johnson- Kura Hulanda- Liens Dive- Lodge KH- Livingstone - Marriott - Otobanda - Papagayo - Tropical Inn

**2010** By Hotels: Avila - Breazeal- Blue Bay- Bon Bini- Chagogo - Dolphin Suites- Floris -Huilitat - Hilton - Howard Johnson- Kura Hulanda- Lodge KH- Livingstone - Marriott - Morona- Otobanda - Papagayo - Plaza Hotel-Renaissance- Royal Resort

**2011** By Hotels: Avila - Breazeal- Blue Bay- Bon Bini- Chagogo - Dolphin Suites- Floris - Hilton - Howard Johnson- Kura Hulanda- Lodge KH- Livingstone - Marriott - Morona- Otobanda - Papagayo -Paza - R enaissance- Royal Resort- Sun Marco